

引领新型储能发展 助力低碳能源时代

LEADING NEW ENERGY STORAGE
SUPPORTING
LOW-CARBON ENERGY

JINGYE
JINGYE NEW ENERGY

Hebei Jingye New Energy Technology Co., Ltd

Address: 300 meters northeast of Shuikeyuan, Luquan District, Shijiazhuang City, Hebei Province (south of Wangfo Road)

Phone: +86-15032071231 +86-18631162601

Email: allen.meng@britishsteel.co.uk eric.zuo@britishsteel.co.uk



JINGYE
JINGYE NEW ENERGY

一站式智慧能源解决方案领跑者
Leader in One-Stop Smart Energy Solutions

CONTENTS

Company Profile	06-07
Core Competence	08-09
Business Areas	10-11
Energy Storage Products	10-11
.PACK	
.Commercial and Industrial Energy Storage Cabinets	12-15
.5.015MWh Energy Storage Container System	16-17
CCS Products	18-21
Application Cases	22-23

Leading New Energy Storage
Supporting Low-Carbon Energy



Company Profile

New Energy Company: "Leading the Development of New Energy Storage, supporting the Low-Carbon Energy Era"

Hebei Jingye New Energy Technology Co., Ltd. (referred to as "Jingye New Energy") was established in 2023 as an intelligent technology enterprise within the new energy sector of JINGYE Group. The company actively promotes the "30·60" dual carbon goals and advances the integration of the industrial chain. It integrates R&D, manufacturing, sales, and operation & maintenance services for energy storage products, focusing on the development and production of core products such as large-capacity energy storage battery systems, power battery systems, and CCS (Cell Contact System) integrated busbars. These products are applied in fields such as new energy power generation, smart grids, end-user terminals, and green transportation, providing one-stop energy storage system solutions for clients in the new energy industry.



Mission:
Build a green, beautiful, low-carbon future



Vision:
Share smart energy and benefit thousands of enterprise



Values:
Innovation, environmental protection, green develop



Brand positioning:
Green dedication, high-quality dedication, integrity dedication

The company actively promotes the "30.60" dual carbon target



Core Competence



Leading the future of energy - layout of the entire industry chain

The company is committed to building a nationally leading R&D and production base for large-scale energy storage systems, with an annual output value exceeding 10 billion yuan. Through deep integration across the entire industrial chain, it achieves comprehensive coverage from CCS R&D and design, lithium battery module production, to energy storage system integration manufacturing, ensuring precision and efficiency in every process.



Advanced manufacturing, efficient production

The production base has a total capacity of 10 GWh for module PACK integration lines and is equipped with corresponding assembly workshops for energy storage system containers. Additionally, it includes six automated CCS integrated busbar production lines with an annual capacity of up to 1.2 million units, ensuring fast and high-standard product delivery.



Wide applications, comprehensive solutions

Products are widely used in large-scale energy storage, commercial and industrial energy storage, and powered vehicles in new energy fields, supported by a comprehensive sales and after-sales service system, providing customers with worry-free and hassle-free lifecycle energy utilization solutions.



PACK:
L173F280/F314-1P52S
L173280/F314-1P104S

Product Introduction:

Standardized Liquid Cooling battery packs, composed of 4 modules in series (52S: 13Cell/M; 104S: 26Cell/M), adopting a modular design for easy maintenance and expansion in the future. The 52S PACK can accommodate 280Ah and 314Ah batteries, offering customers two options with a nominal voltage of 166.4V and nominal energy capacities of 46.592kWh and 52.249kWh, respectively.

The 52S PACK can accommodate 280Ah and 314Ah batteries, offering customers two options with a nominal voltage of 166.4V and nominal energy capacities of 46.592kWh and 52.249kWh, respectively.

three types of PACKS modules are selected to use MSDs with built-in fuses, ensuring high-voltage safety while supporting fire suppression systems with different extinguishing agents such as aerosol and perfluorohexanone. This provides customers with reliable and safe services.

Features:



High Density

Uses 280/314Ah cells, enhancing space utilization.



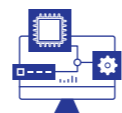
Large Modules

1P104S dual-mode design for higher energy.



High Safety

Multi-point monitoring and automatic disconnection.



Intelligent

Real-time monitoring by BMS.

Technical Parameters:

Cell Parameters	280Ah/314Ah	314Ah
Combination Method	L173F280/F314-1P52S	L173F314-1P104S
Rated Voltage	166.4V	332.8V
Rated Capacity	280Ah/314Ah	314Ah
Rated Energy	46.592/52.249kWh	104.499kWh
Cooling Method	Liquid Colling	Liquid Colling
Power Rate	0.5P	0.5P
Dimensions	1152.5*790*245mm	2160*790*245mm
Example		

USER-SIDE SOLUTIONS: LFP-261KWh



characteristic:



High Energy Density
Utilizes 314Ah high-energy density cells.



High Safety
Full temperature range/voltage monitoring, chemical and water firefighting systems.



High Efficiency
>90% charge-discharge efficiency.



Expandability
Cabinets are arranged in series based on project requirements to meet various scale and power demands.



Technical Parameter:

Commercial and Industrial Energy Storage Cabinet Parameters		
Energy Storage Parameters	Storage Capacity	LFP-216KWh
	Nominal Voltage	DC 832V
	Cycle Times	>8000 times (90%DOD, remaining 70%,25°C)
	Combination Form	5*1P52S
Environment	Storage Configuration	314Ah , lithium iron phosphate battery system
	Charging Temperature	0°C ~55°C
	Discharging Temperature	-20°C ~55°C
	Storage Temperature	-20°C ~60°C
	Relative Humidity	0%RH~95%RH, non-condensing
	Operating Altitude	≤ 4000m (power derating above 3000m)
Lifecycle	Temperature Difference	3°C in PACK, 5°C in cabinet
	Equipment Full Lifecycle	10 years (2 charges and discharges daily, considering 3% annual decay)
Others	Communication Method	CAN/RS485/ Ethernet
	Protection Level	IP55, salt fog protection (battery compartment)
	Cooling Method	Liquid cooling
	Fire Protection	Perfluoroacetone

NETWORK-SIDE SOLUTIONS: LFP-417KWh



characteristic:

High Energy Density
Utilizes 314Ah high-energy density cells.

High Safety
Full temperature range/voltage monitoring, chemical and water firefighting systems.

High Efficiency
>90% charge-discharge efficiency.

Expandability
Cabinets are arranged in series based on project requirements to meet various scale and power demands.

Commercial and Industrial Energy Storage Cabinets
Customization Available.



Technical Parameter:

Commercial and Industrial Energy Storage Cabinet Parameters		
Energy Storage Parameters	Storage Capacity	LFP-417KWh
	Nominal Voltage	DC 1331.2V
	Cycle Times	>8000 times (90%DOD, remaining 70%,25°C)
	Combination Form	5*1P52S
Environment	Storage Configuration	314Ah , lithium iron phosphate battery system
	Charging Temperature	0°C ~55°C
	Discharging Temperature	-20°C ~55°C
	Storage Temperature	-20°C ~60°C
	Relative Humidity	0%RH~95%RH, non-condensing
	Operating Altitude	≤ 4000m (power derating above 3000m)
Lifecycle	Temperature Difference	3°C in PACK, 5°C in cabinet
	Equipment Full Lifecycle	10 years (2 charges and discharges daily, considering 3% annual decay)
Others	Communication Method	CAN/RS485/ Ethernet
	Protection Level	IP55, salt fog protection (battery compartment)
	Cooling Method	Liquid cooling
	Fire Protection	Perfluoroacetone

Energy Storage Container



Product Introduction: :

5015KWh Liquid Cooling energy storage system based on domestic high-capacity 314Ah energy storage cells, consisting of a 104S long PACK, battery cluster units, battery management systems, fire protection systems, lighting systems, thermal management systems, electrical systems, and environmental control systems. The energy storage

system uses simplified integration technology, installing PACK, distribution busbars, liquid cooling units, temperature control systems, and fire protection systems within a standard 20-foot container (2438mm-2896mm-6058mm), arranged in three compartments, ensuring safety control while being suitable for various transportation conditions and site designs.

Product Features:

01. Battery Technology:

Utilizes mature, high-efficiency, long-life large-capacity lithium iron phosphate batteries.

02. Battery Management:

Equipped with advanced intelligent battery management products to ensure product safety.

03. Thermal Management:

Achieves high-precision intelligent operation environment control through industrial-grade air conditioning systems, ensuring a temperature difference of 3°C inside the PACK and 5°C in the cabinet.

04. Monitoring System:

Installed with temperature and humidity, smoke, video monitoring, and access monitoring equipment inside the container.

05. Automatic Alarm and Fire Extinguishing System:

Configured with a three-level automatic alarm fire extinguishing system for PACK, cluster, and compartment.

06. Safety Protection:

Optional fire protection system using perfluorohexane or aerosol.

07. Modular Design:

Highly modular product design, simple structure easy to transport, install, and maintain.

Technical Parameter: :

5.015MWh Energy Storage Container System Parameters

		5.015MWh Energy Storage Container System Parameters		
Main parameters	Cell Type	LFP 314Ah	Protection Level	IP55/IP54 salt spray resistance
	Configuration	12* (1P104S*4)	Operating Temperature Range	-20~55°C
	Battery Capacity	5015KWh	Relative Humidity	5%~95%RH
	Rated Voltage	1331.2V	Maximum Operating Altitude	≤ 4000m (power derating above 3000m)
	Voltage Range	1164.8~1518.4V	Cooling Method	Liquid cooling
	Charge/Discharge Power Rate	0.5P/0.25P	Fire Protection System	Perfluorohexane
	Auxiliary Power Voltage	380V	Compliance Standards	GB/T36276、IEC/EN62619、IEC/EN62477、UN38.3、IEC/EN61000-6-2/4、IEC/EN63056
Auxiliary Interfaces	System Weight (approx.)	43t	Operation and Maintenance Method	External maintenance
	Auxiliary power interface	AC380V, three-phase four-wire	Communication Method	CAN/RS485/Ethernet
	Auxiliary Power Capacity	70kW	Fire Water Interface	Water immersion/sprinkler

Thermoforming
· Blade battery · 1P52S

· Energy Storage · 1P26S
Thermoforming

· Automotive · 1P12S
Injection Molding

· Automotive · 1P17S
Thermoforming

· Energy Storage · 1P13S
Thermoforming

· Automotive · 1P61S
Direct Welding

CCS Product

Product Features:



Reliability

Good line sealing, moisture resistance, oxidation resistance, corrosion resistance, etc.



High Integration

Small size, light and thin saving the overall module space, making the overall module lightweight and convenient.



Simple Installation

It is easy to assemble and the labor cost is lower than the wire harness scheme.



Strong Applicability

Easy to modularize and standardize, flexible connection with cells, and can be multi-serial and multi-parallel.

Core Products:

Name	Length	Voltage Resistance	Insulation Performance	Product Advantages
Injection Molding CCS	Max length approx. 1000mm	2700VDC 60S 1mA	1000VDC 60s 500MΩ	1. Overcurrent fuse protection 2. Isolation plate fixing aluminum bus 3. Stress release for cell thermal expansion 4. Flat FPC structure to avoid short circuit risks
Thermoforming CCS	Max length over 2000mm	3800VDC 60S 1mA	1000VDC 60s 500MΩ	1. Overcurrent fuse protection 2. Aluminum busbar fixed to blown isolation plate 3. Stress release for cell thermal expansion 4. Flat FPC ties structure to avoid short circuit risks
Direct Welding CCS	Max length over 2000mm	3800VDC 60S 1mA	1000VDC 60s 500MΩ	1. No nickel sheets, using ultrasonic welding 2. FPC welded to aluminum busbar 3. Low cost

R&D Capability:

Rich experience in CCS design and manufacturing; It can provide a full set of design solutions according to customer product needs, with fast and flexible response communication skills, we can respond to customer needs in a timely manner.

Core Products:

No.	Process Type	Application Scenario	Product	Specification
1	Thermoforming	Energy Storage	1P13S	990*173mm
2	Thermoforming	Energy Storage	1P26S	974*350mm
3	Thermoforming	Blade Battery	1P52S	2082*218mm
4	Injection Molding	Automotive	1P12S	430*170mm
5	Thermoforming	Automotive	1P17S	673*204mm
6	Direct Welding	Automotive	1P61S	1249*462mm



JINGYE
JINGYE NEW ENERGY

Technology leads the creation and satisfaction of digital smart energy

Peak shaving and frequency regulation of power grid



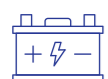
Energy storage capacity: 110MW/320MWh

Hebei Pingshan Independent Energy Storage Power Station Demonstration Project



System Solution:

The Grid-side Energy Storage Station Project adopts lithium-iron phosphate batteries and liquid-cooled energy storage system.



business Model:

Connect to the Jinan Power Grid, provide peak shaving and power maintenance services, alleviate peak power supply pressure, and save on power grid renovation costs.